



Hauptsitz Deutschland /  
Headquarters Germany:

HSM GmbH + Co. KG  
Austrasse 1 - 9  
88699 Frickingen

Tel. +49 (0) 75 54 / 2100-0  
Fax +49 (0) 75 54 / 2100-160  
info@hsm.eu  
www.hsm.eu  
www.securio.com  
www.v-press.com

Vertrieb / Sales:

Gratis Hotline  
DE, AT, BE, NL, LU, DK  
Tel. 00800 44 77 77 66  
Fax 00800 44 77 77 67

HSM Vertrieb Deutschland  
Deutschland@hsm.eu

HSM Vertrieb Österreich  
Austria@hsm.eu

HSM Verkoop België, Nederland,  
Luxemburg  
Benelux@hsm.eu

HSM Salgs Support Danmark  
Danmark@hsm.eu

HSM Commerciale Italia  
Italia@hsm.eu

HSM GmbH + Co. KG  
Oficina Barcelona  
C/Tona  
Nave nº 15 "El Lago"  
Pol. Ind. Monguit  
08480 L'Ametlla del Vallès  
BARCELONA  
Linea Servicio Técnico Gratuita  
Tel. 00800 44 77 77 66  
Fax 00800 44 77 77 67  
Spain@hsm.eu

HSM France SAS  
Parc de Genève  
240, Rue Ferdinand Perrier  
69800 SAINT-PRIEST  
Tél. +33 (0) 810.12.26.33  
Prix d'un appel local  
Fax +33 (0) 4.72.51.74.81  
France@hsm.eu

HSM of America LLC  
1075 Andrew Drive, Suite C  
West Chester  
PA 19380  
Tel. (610) 918-4894  
(800) 613-2110  
Fax (610) 918-4899  
customerservice@hsmofamerica.com  
info@hsmofamerica.com  
www.hsmofamerica.com

HSM (UK) Ltd.  
14 Attwood Road / Zone 1  
Burntwood Business Park  
Burntwood  
Staffordshire  
WS7 3GJ  
Tel. +44 (0) 1543.272.480  
Fax +44 (0) 1543.272.080  
info@hsmuk.co.uk  
www.hsmuk.co.uk

HSM Polska SP. z o.o.  
ul. Emaliowa 28  
02-295 Warszawa  
Tel. +48 / 22 - 862 23 69/70  
Fax +48 / 22 - 862 23 68  
info@hsmplaska.com  
www.hsmplaska.com

Druckwerk Süd 10/2009 - # W62442



**Document shredders SECURIO**  
**Security is beautiful.**

**HSM®**

**HSM®**

## Document shredding is a necessity. Why not make it as pleasant as possible?

Data security in the office has become an everyday matter of course. This applies both to compliance with data protection laws and the protection of intellectual property rights for a company or individual. We have now made this everyday task fit for the future. We have developed document shredders for the office of today and combined this with our experience in modern trends.

We have focussed on what is important for you. That is of course data protection but also reduced noise emissions, intelligent energy management and a design which fits in perfectly with a modern office environment. The finished product – the SECURIO.

SECURIO. Security is beautiful.



At security levels 2 and 3, the SECURIO B24 can also shred CDs with ease.



Folding safety element provides optimum protection for the operator.



Removable container for easy removal of the shredded material.



### Document shredder SECURIO B22

Compact and modern in the office at home or a small office.



### Document shredder SECURIO B24

For installation directly by the desk.



### Document shredder SECURIO B32

Suitable for central use by several people within a department or small office.



### Document shredder SECURIO B34

Central positioning in busy offices. Large volume, high performance.



### Document shredder SECURIO P36

Powerful shredder for entire departments or office floors.



## Style. Tranquility. Efficiency.

Document shredders have become an integral part of modern offices. Therefore, it is only appropriate that SECURIO shredders are totally state-of-the-art in terms of their design, economic energy management (EMCS), absolute ease of operation and low-noise in operation. These combined features produced a document shredder for the future office today.

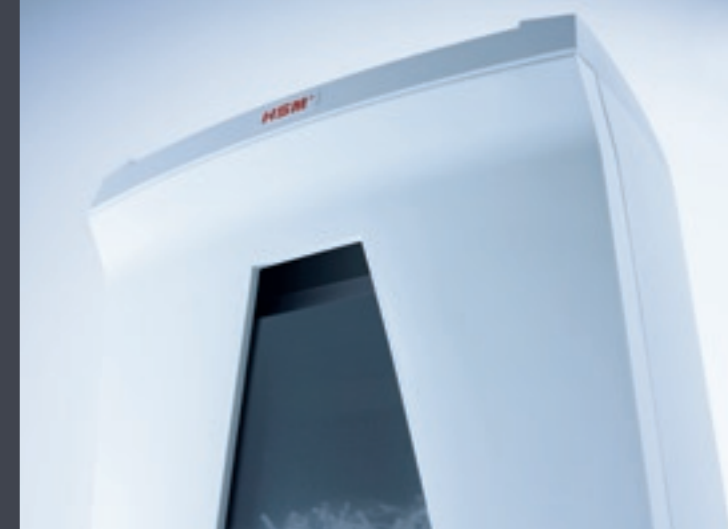
### **SECURIO – our credo for ease of use:**

- Simply select the different functions with a single control key: start, stop, temporary and permanent mode.
- In the event of a paper jam, the reverse function starts automatically (except with SECURIO B22). Alternatively, you can press the "R" button if you wish to operate the reversing function yourself.
- A transparent front window allows quick and easy site of container capacity and level.
- A large waste container extends the interval between emptying to save time and money.

- Separate waste bags for paper and CDs allow waste separation (SECURIO B32 model or higher).

### **Quiet operating sound**

- Great emphasis was placed on attractive sound design during the development phase. The SECURIO shreds your documents with a pleasantly quiet operating sound.



## The future is in our hands.

HSM stands for quality "Made in Germany" and for durable products, which will not lose their value in the future and which work efficiently today. These principles of sustainability and the sense of responsibility apply not only to HSM machines, but also to the manufacturing process, material selection and use of energy within the company. We cannot think in the short-term today for the generations of tomorrow. Due to our commitment in Germany, HSM is embedded in the optimal framework conditions for environmental protection.

- Germany promotes air and water purification with some of the most progressive legislation in the world

- Germany is a world's leading force in climate protection and in its efforts to gradually decrease CO<sub>2</sub> emissions - HSM operates in this eco-political context
- HSM guarantees that products are manufactured without the use of child labour
- HSM guarantees humane working conditions and optimal work safety in all plants
- Environmental awareness is called for and promoted in the whole workforce



## Contribution of HSM for environmental protection:

- Production of innovative technologies for environmental protection - HSM baling presses and compactors for the recycling industry
- 100% use of recyclable materials
- Material labelling of all parts
- No composite materials
- Exclusive use of lacquers low in solvent
- Energy-saving drives and control units
- Regranulation of plastics
- Recycling or reprocessing of second-hand machines on site or using WEEE
- Participation in WEEE, ROHS, REACH

## EMCS (energy management and control system) – dealing with energy in a sensible manner.

- Automatic shut-down function: The SECURIO automatically switches to energy-saving mode 2 minutes after use, i.e. all unnecessary electrical consumers are switched off or their consumption is reduced and you save up to 30%. If you now feed the shredder with paper, it will automatically switch on again.
- Automatic switch-off: The SECURIO switches off completely if it is not used for 1 hour. As a result, no valuable energy is wasted at night or at the weekend (zero consumption). The SECURIO is immediately operational again at a press of the elegant control key.
- Temporary mode: To shred small pieces of paper or credit cards, press the control key for only 2 seconds – the SECURIO runs for 10 seconds and then automatically switches to stand-by.
- Permanent mode: For large quantities of paper and documents, the control key is pressed for 4 seconds and the SECURIO is activated for continuous operation. The machine automatically returns to the stand-by mode when the operation is completed.
- Save energy: the EMCS intelligent energy management saves you up to 90% power consumption compared to a standard stand-by switch. The SECURIO B22 model is equipped with a ZES (zero energy stand-by), which means it does not consume any power in the stand-by mode.



SECURIO B24

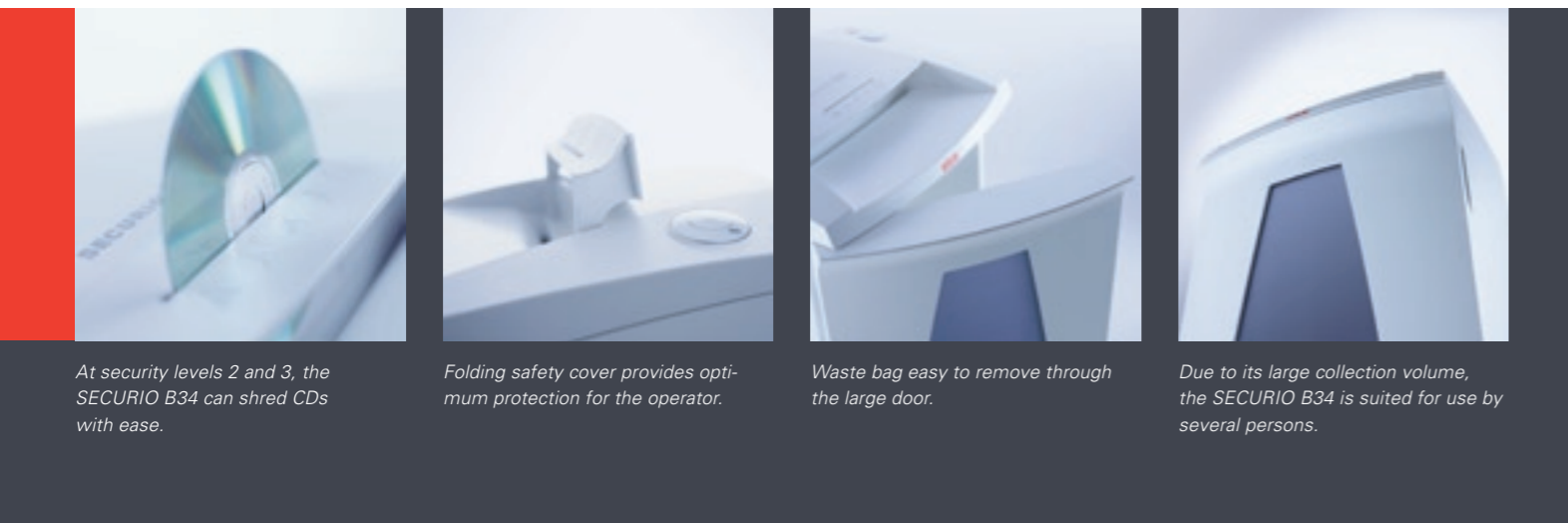


# SECURIO B34



## Central positioning in busy offices. Large volume, high performance.

- For shredding not only paper and documents but also credit and store cards as well as CDs (details see below)
- Intake width: 310 mm (DIN A3)
- Available as strip cut version with security level 2
- Available as particle cut version with security levels 3, 4 and HS Level 6
- Removable, reusable waste bag: 100 l
- Height: 845 mm
- Auto-reverse in the event of a paper jam
- EMCS (Energy Management and Control System): Automatic shut-down function, automatic switch-off, temporary mode, permanent mode
- Special CD waste bag for correctly sorted separation of the shredded material
- Mobile on castors



At security levels 2 and 3, the SECURIO B34 can shred CDs with ease.

Folding safety cover provides optimum protection for the operator.

Waste bag easy to remove through the large door.

Due to its large collection volume, the SECURIO B34 is suited for use by several persons.

Model	SECURIO B34		SECURIO B34		
	Strips	Strips	Particles	Particles	Particles
Cutting type	Strips	Strips	Particles	Particles	Particles
Cutting size in mm	5.8	3.9	4.5 x 30	1.9 x 15	1 x 5
Security level DIN 32757-1	2	2	3	4	HS Level 6
Cutting capacity* 70 g/m <sup>2</sup> in sheets	30-32	25-27	20-22	13-14	6
Cutting capacity* 80 g/m <sup>2</sup> in sheets	26-28	22-24	17-19	11-12	5
Cutting speed in mm/s	88	88	80	80	80
Intake width in mm	310	310	310	310	310
Motor	590 W	590 W	590 W	590 W	590 W
Voltage / Frequency	230 V / 50 Hz	230 V / 50 Hz	230 V / 50 Hz	230 V / 50 Hz	230 V / 50 Hz
Dimensions W x D x H in mm	541 x 439 x 845	541 x 439 x 845	541 x 439 x 845	541 x 439 x 845	541 x 439 x 845
Weight in kg	34.5	34.5	42	42	42
Container/collection volume in l	100	100	100	100	100
Applicable for paper and					

\* max. per cycle DIN A4, 70 g/m<sup>2</sup> or DIN A4, 80 g/m<sup>2</sup>.

All technical data and dimensions are approximate values. Technical and design modifications reserved.

# New perspectives with established values.

## Quality "Made in Germany" by HSM.

SECURIO is the next generation of the shredding machine. Up to date. Designed to meet your requirements. And based on the entire technical experience of a renowned manufacturer. The decisive factors for HSM products: quality, performance and durability – are also embodied in the SECURIO.

## The plus-guarantee.

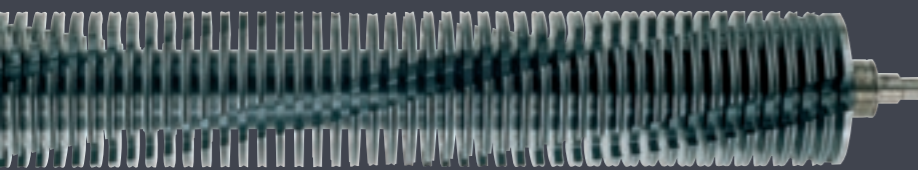
On solid steel cutting rollers 30-year warranty within the EU, in all other countries lifetime warranty (HSM Lifetime Warranty), subject to the national laws of the relevant country (HS Level 6 and normal wear and inappropriate use excluded).

## The drive.

The optimum design of all cutting unit components ensures smooth operation, saves valuable energy and reduces wear. All motors are designed for continuous operation.

## The cutting rollers.

The specially hardened 100 % steel cutting rollers are manufactured from a single piece of steel, will not be affected by wear and tear and ensure a permanently precise cut. In addition, staples and paper clips present no problems for SECURIO.



### V-TEK by HSM

The V-groove of the cutting rollers is a ground-breaking development of HSM in terms of shredding equipment. The extremely efficient and high-precision cutting mechanism of the V-groove ensures a considerably higher cutting capacity at equivalent energy consumption.

## Symbols key



**Security level 1 – Strips**, shredding no. 4  
For internal documents that need to be rendered illegible such as computer reports or bad copies.  
Cutting size 5.8 mm.



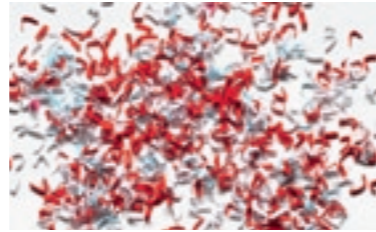
**Security level 2 – Strips**, shredding no. 5  
For internal documents that need to be rendered illegible such as computer reports or bad copies.  
Cutting size 3.9 mm.



**Security level 3 – Particles**, shredding no. 6  
For confidential documents e.g. personal data and documents.  
Cutting size 4.5 x 30 mm and 3.9 x 30 mm.



**Security level 4 – Particles**, shredding no. 7  
When the confidentiality of documents is of existence importance for the company.  
Cutting size 1.9 x 15 mm.



**HS Level 6 - Particles**  
This is the maximum security feature developed by HSM (still out of the DIN standard) - especially for shredding highly confidential documents.  
Cutting size 1 x 5 mm.



### Explanations of the technical data:

Cutting type :	The strips or particles resulting from shredding the material.
Cutting size :	Dimension of the strips or particles of the shredded material (depending on the paper quality).
Security levels :	In accordance with DIN 32757-1, except HS Level 6, developed by HSM.
Shredding no. :	In accordance with DIN EN 15713, except HS Level 6, developed by HSM.
Cutting capacity :	The maximum number of sheets (DIN A4, 70 g/m <sup>2</sup> or 80 g/m <sup>2</sup> ), fed lengthways, which can be cut in one cycle. The performance data is determined when the motor is cold and the cutting device is freshly oiled. A weaker mains voltage or a different mains frequency to the one specified could result in less sheet capacity and increased noise during operation. The sheet capacity can vary depending on the structure and properties of the paper and on the way it enters. The performance data in 80 g/m <sup>2</sup> is calculated.
Cutting speed :	This is calculated on the basis of the external diameter and speed of the cutting rollers in idle operation.
Intake width :	Maximum effective width of the intake opening.
Motor :	Power consumption of the document shredder motor at maximum cutting capacity (see above).
Voltage / frequency :	Alternating current power supply.
Dimensions :	External dimensions of the machine when ready for operation.
Weight :	Net weight of machine without packaging.
Container volume / collecting container :	Total volume of the collecting container resp. collection capacity for shredded material until the machine switches off.

All technical data and dimensions are approximate values. Technical and design modifications reserved.